

[illegible]

Remarks: LOGGED AS PER CUSTOMER REQUEST

Log Correlated To:	KELLY BUSHING
Perforated At:	
W.R. Plug Set At	
Bridge Plug Set At:	
Cement Retainer Set At:	
Production Packer Set At:	

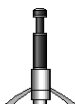
All interpretations are opinions based on inferences from electrical or other measurements and we cannot, and do not guarantee the accuracy or correctness of any interpretations, and we shall not, except in the case of gross or willful negligence on our part, be liable or responsible for any loss, costs, damages or expenses incurred or sustained by anyone resulting from any interpretation made by any of our officers, agents, or employees. These interpretations are also subject to our general terms and conditions as set out in our current price schedule.

CCL - GR - RADIAL - VDL - CBL

Max. Length: 7.64 m

Cable Head

Bow Spring



-1.53 m Top of String

Bow Spring Length: 0.88 m Max Diameter: 69.85 mm

CCL-GR

Length: 1.85 m Max Diameter: 69.85 mm

Bow Spring

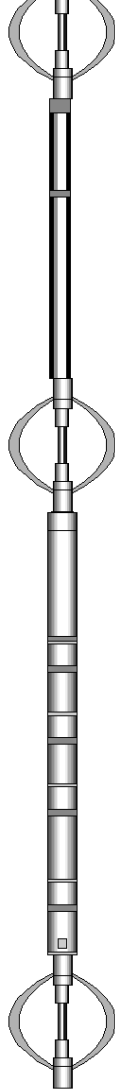
Length: 0.66 m Max Diameter: 69.85 mm

Applied RIB CBL

Length: 2.97 m Max Diameter: 69.85 mm

Bow Spring

Length: 0.88 m Max Diameter: 69.85 mm



0.00 m - CCL

1.00 m - Gamma Ray

3.26 m - Transmitter

3.74 m - RIB Receivers

4.20 m - 3 ft. Receiver

4.88 m - 5 ft. Receiver

6.12 m Bottom of String

CEMENTING DATA

**SURFACE CASING: 244.5 mm x 53.60 kg/m LANDED AT 426.0 mKb.
CEMENTED WITH 38.5 TONNES + 2% CaCl₂.**

4.0 CEMENT RETURNS TO SURFACE.

PRODUCTION CASING: 177.8 mm X 34.2 kg/m LANDED AT 1635.0 mKb.

CEMENTED WITH 18.7 TONNES FILL LITE

2-125 +3% A-9 + .7% R-6N AND 8.3 t "G"CEMENT + .2% R-6N +.4% FL-77. NO

RETURNS TO SURFACE.

MAIN PASS

2020-03-05 00:35

Tension (lbF)

0 4000

CL (mPV)

0 100

Gamma Ray (API)

0 120

Pass No. 6

METERS

1:240

-5.8

Radial Minimum Amplitude (mV)

0 100

Radial Maximum Amplitude (mV)

0 100

3' Amplitude (mV)

0 100

3' Amplitude x 5 (mV)

0 20

3' Transit Time (μs)

650 150

Logging Up

Shutin

Pipe Time (μs)

200 1200

3' VDL (μs)

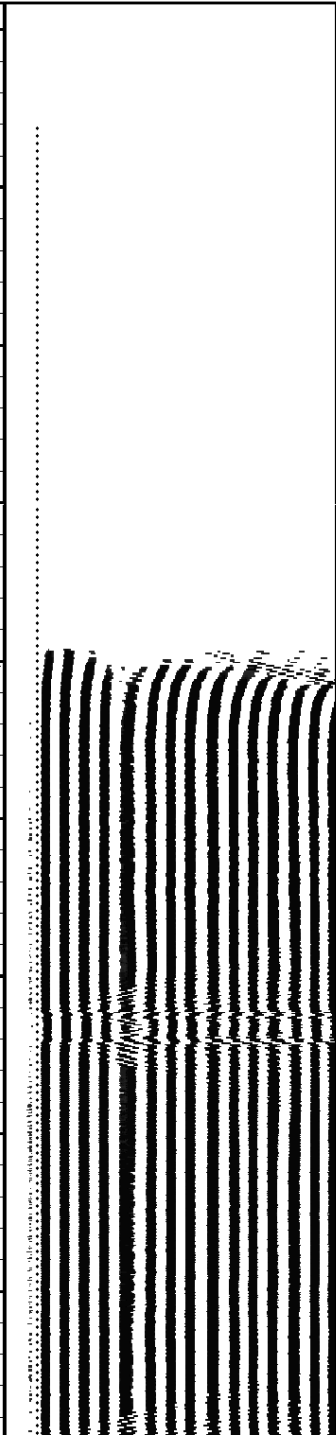
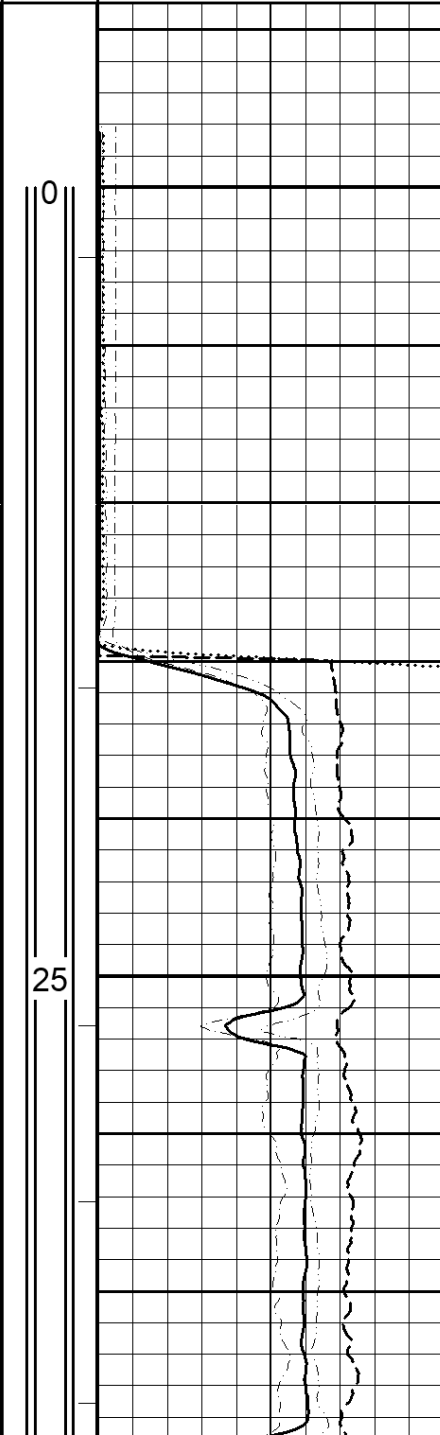
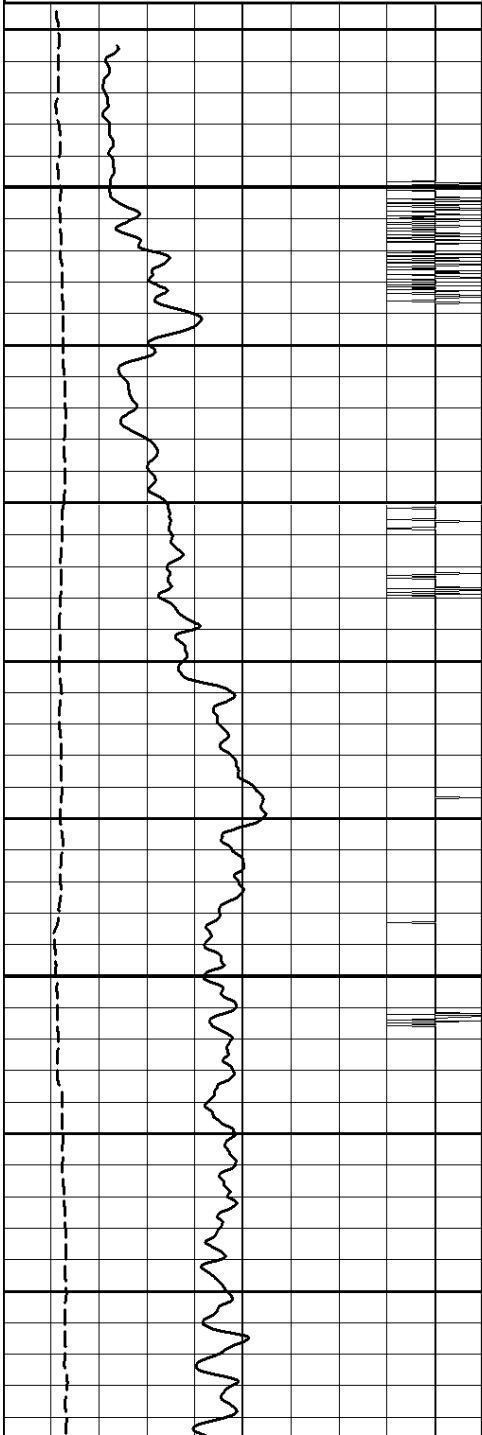
200.00 1200.00

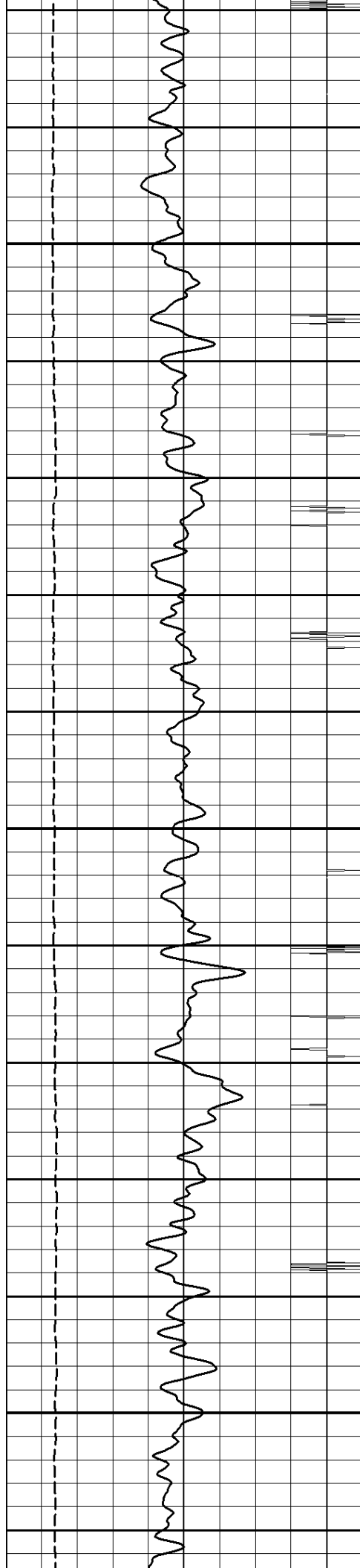
Radial Cement Map (mV)

0.00 35.00

File MAIN PASS.pre

Rev. 2017.03.21

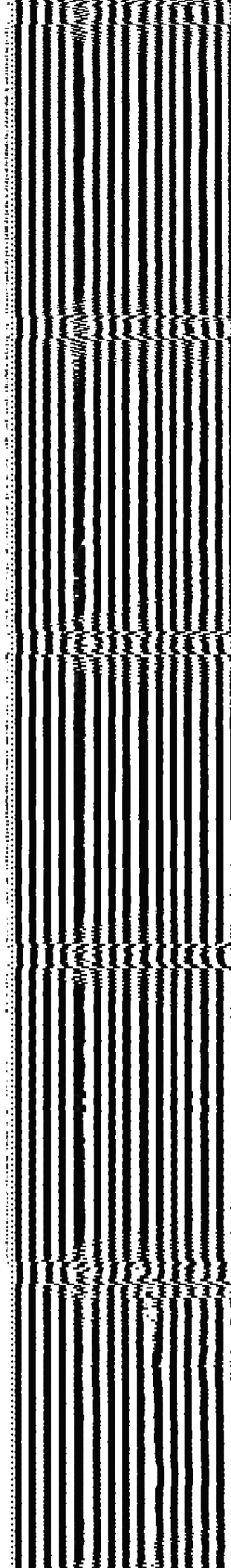
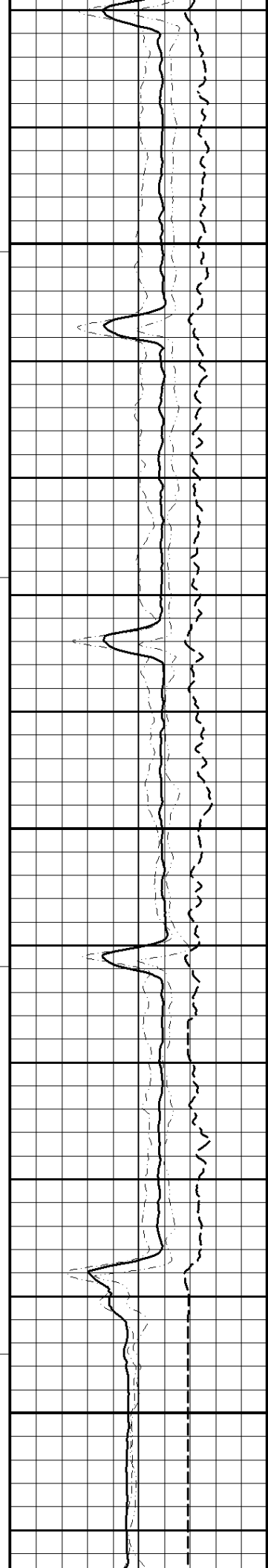


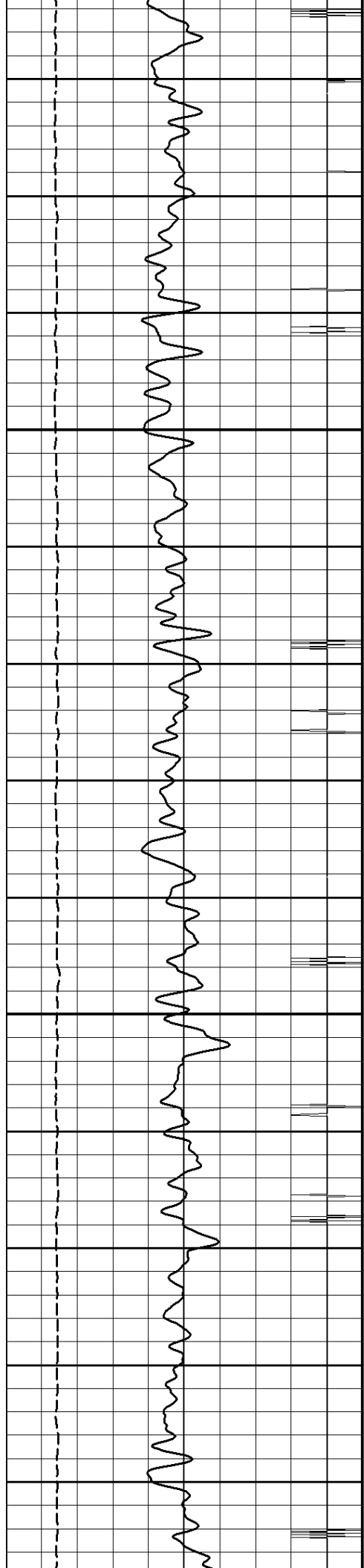


50

75

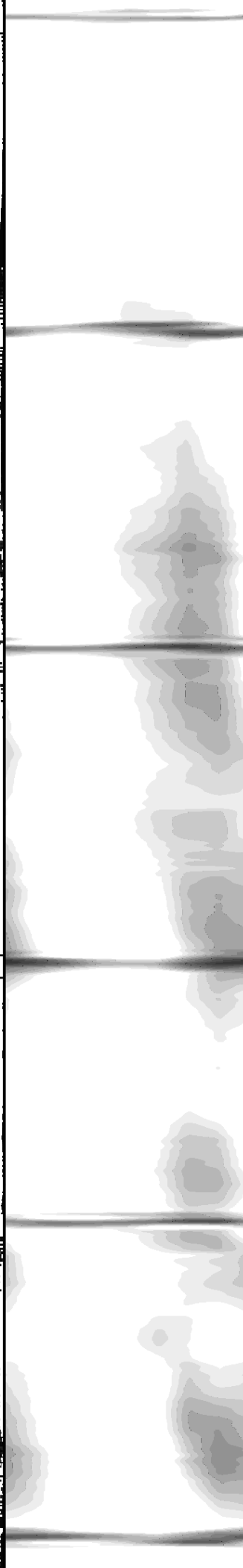
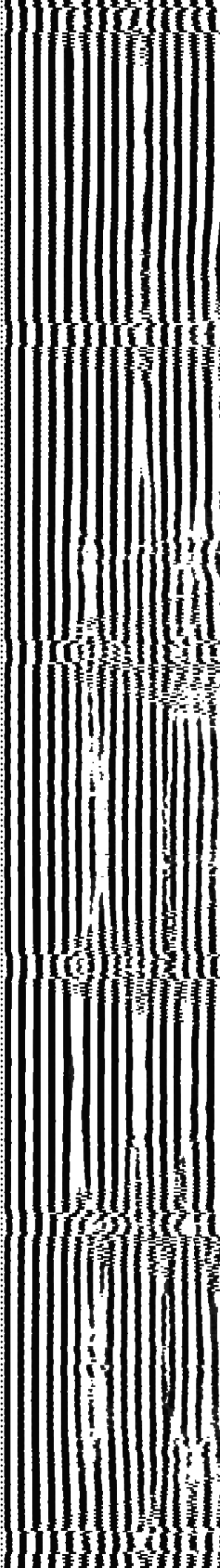
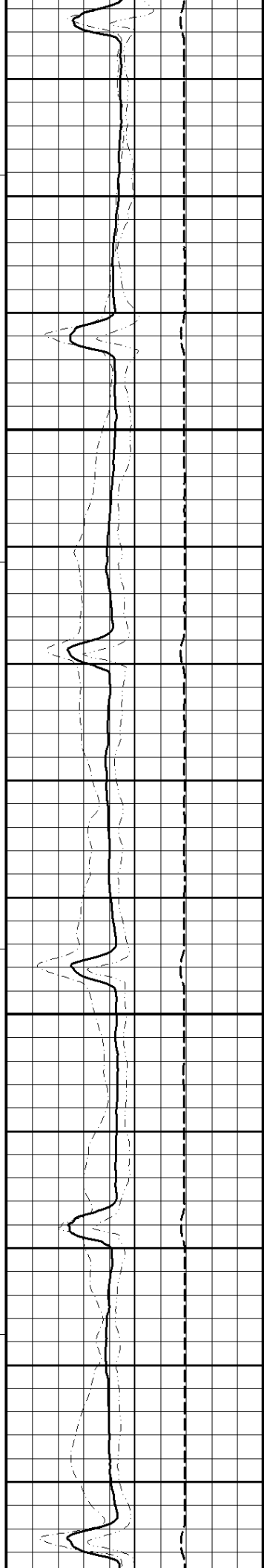
100

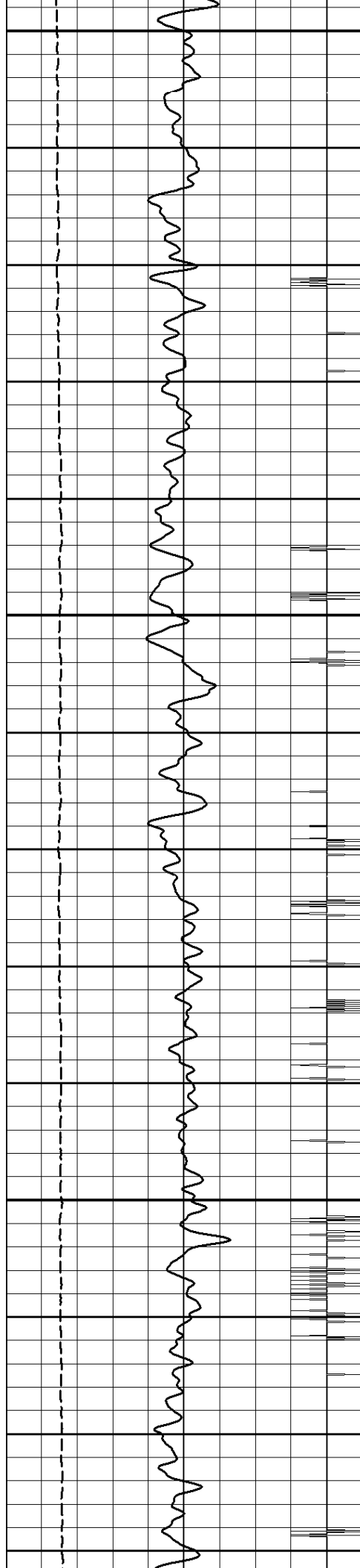




125

150

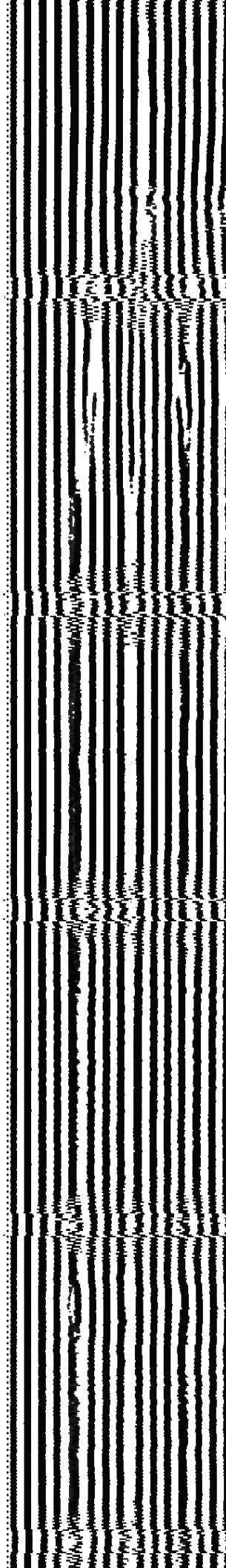
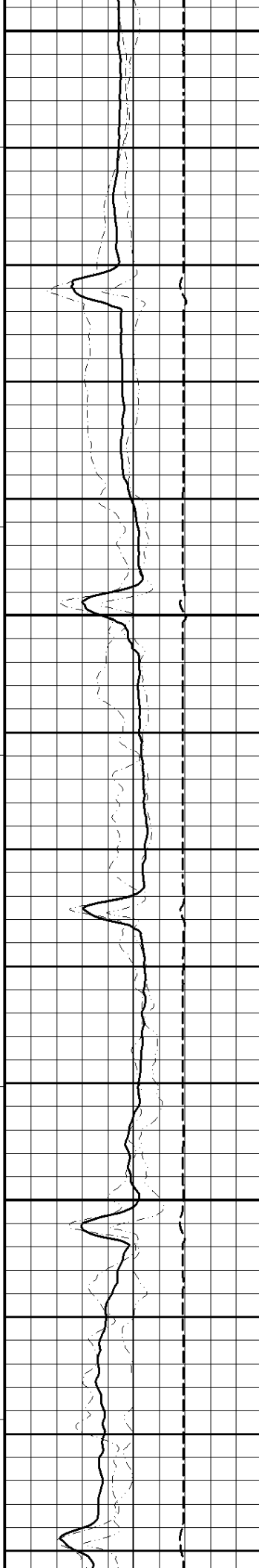


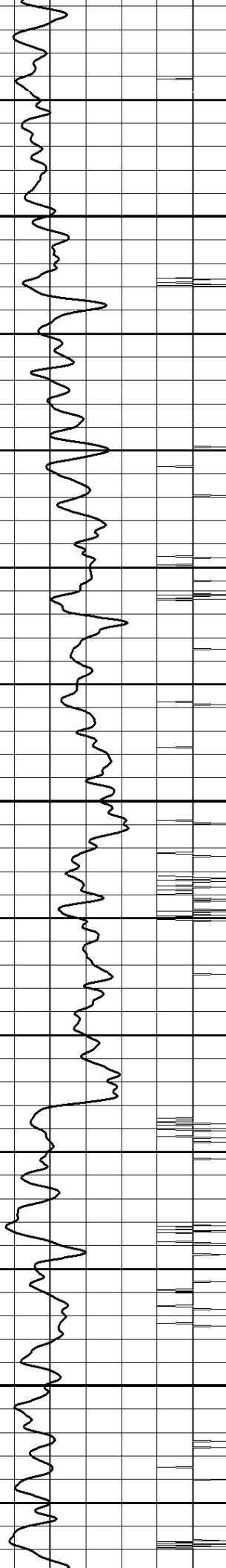


175

200

225

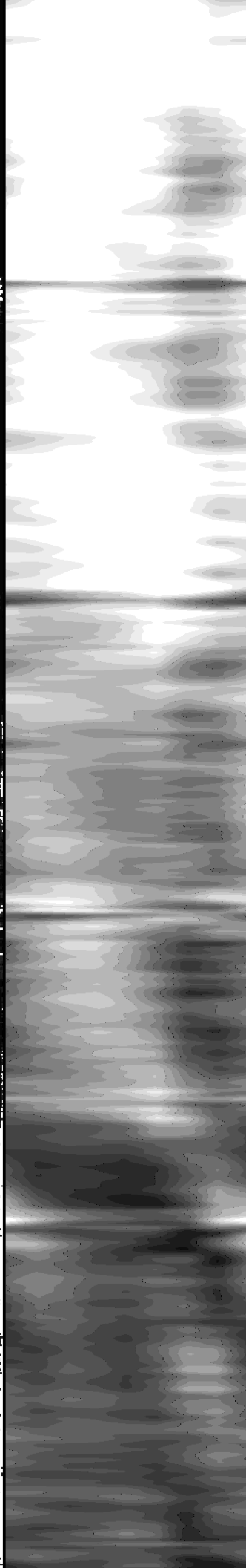
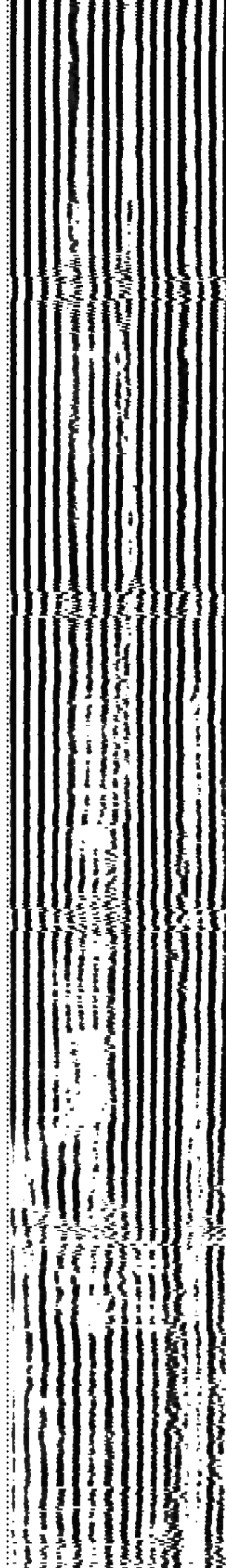
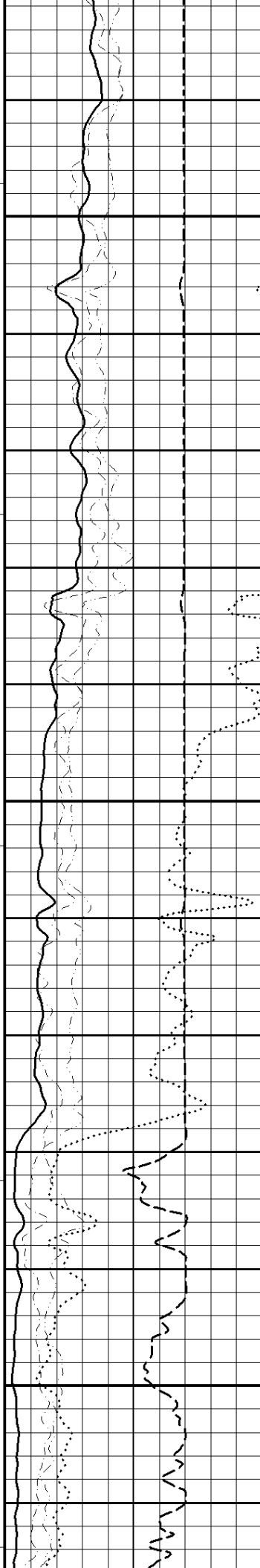


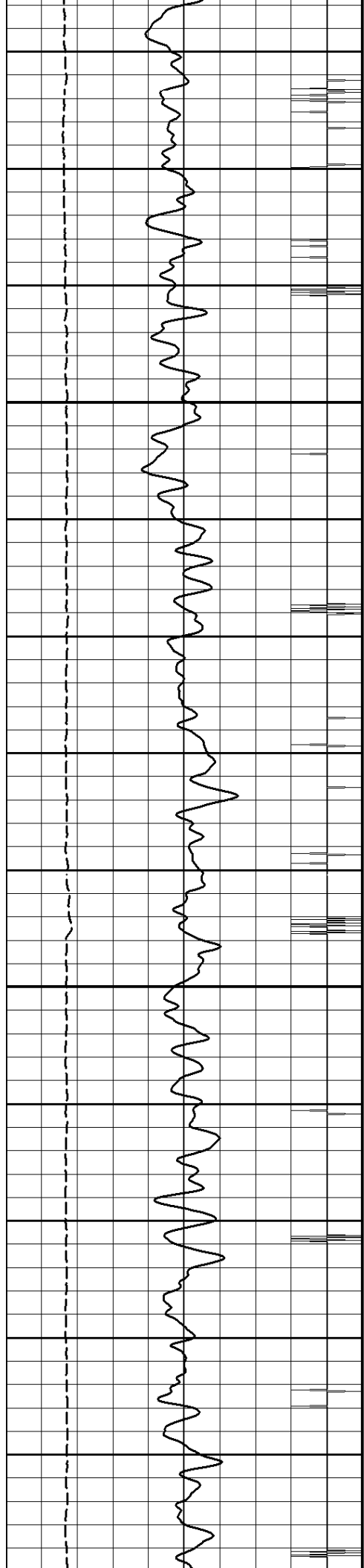


250

275

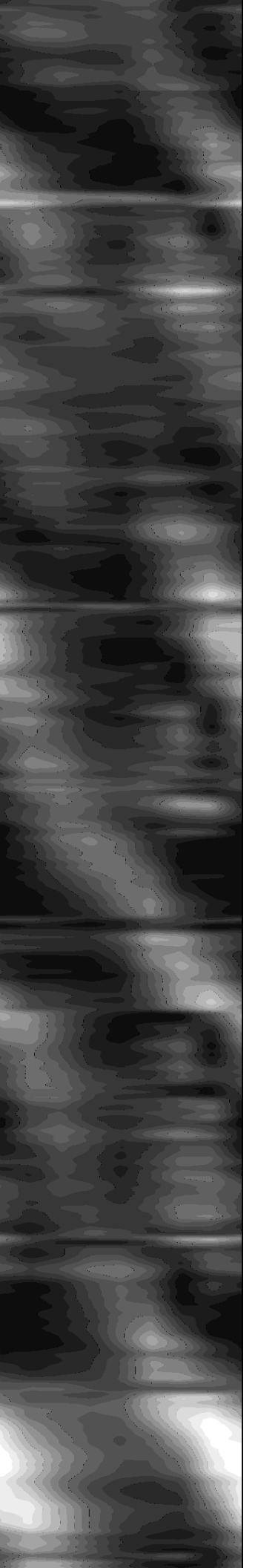
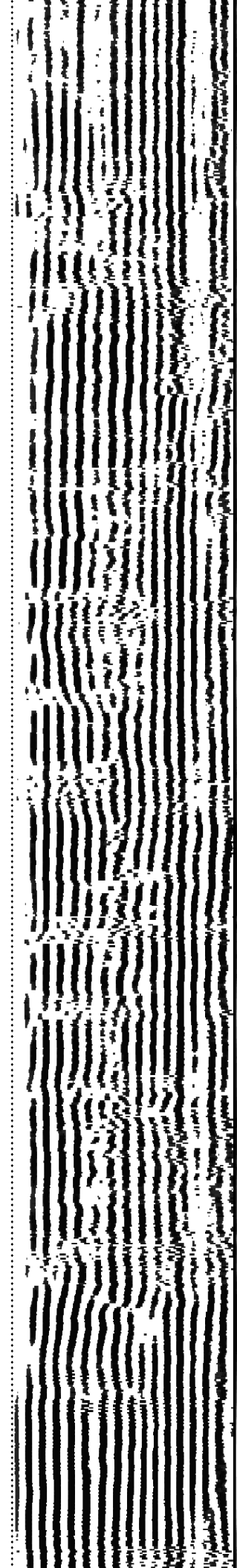
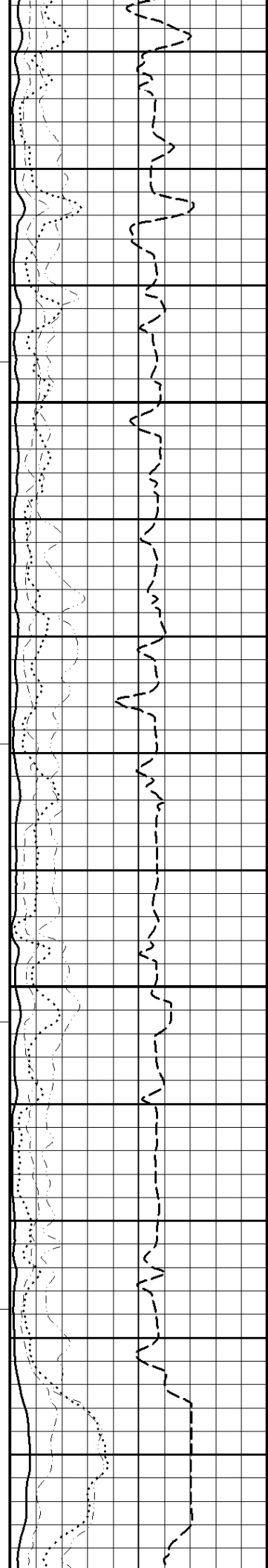
300

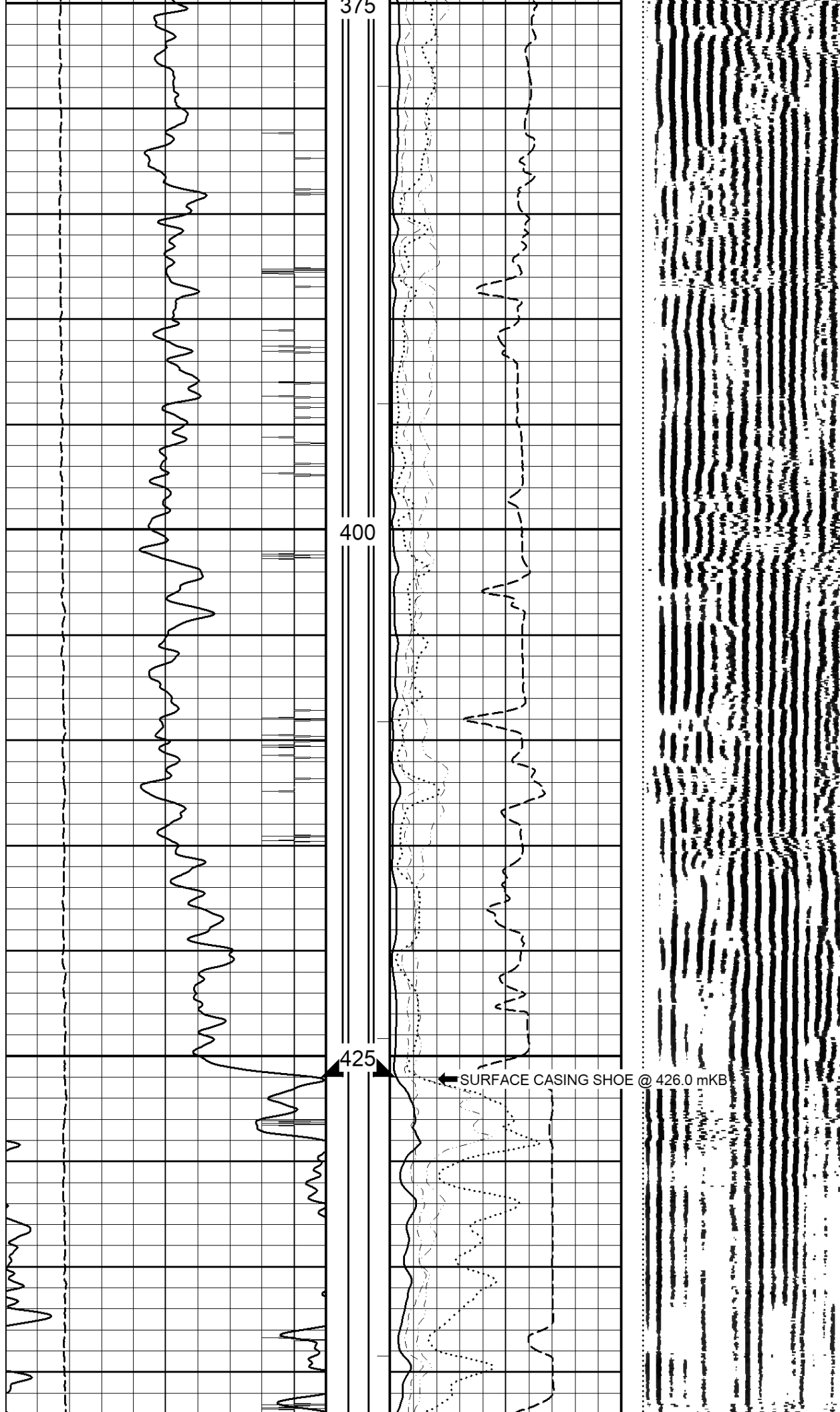


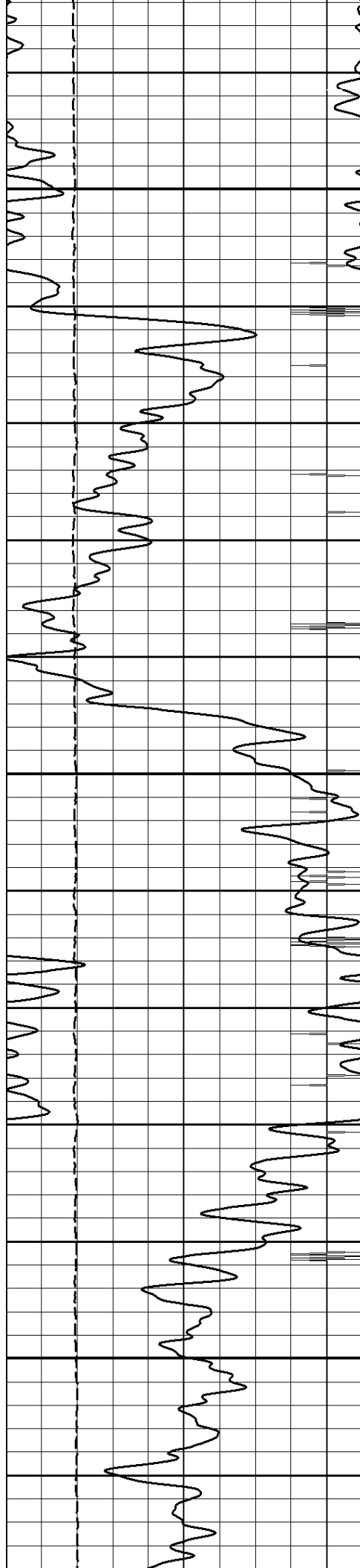


325

350



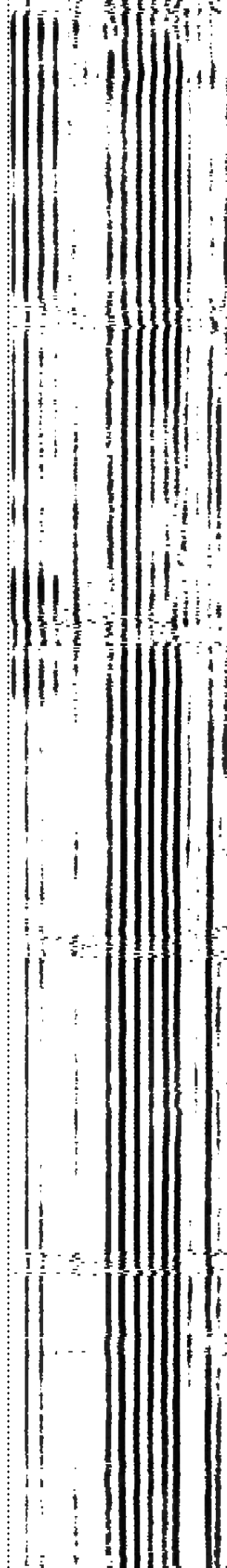
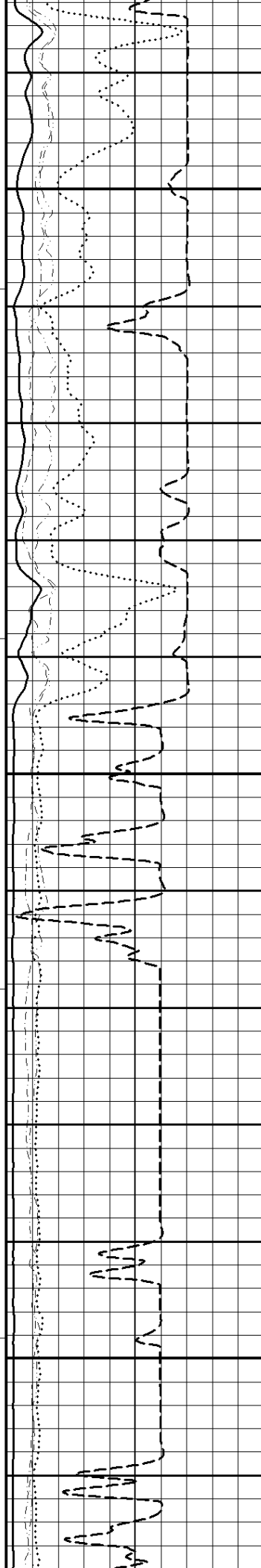


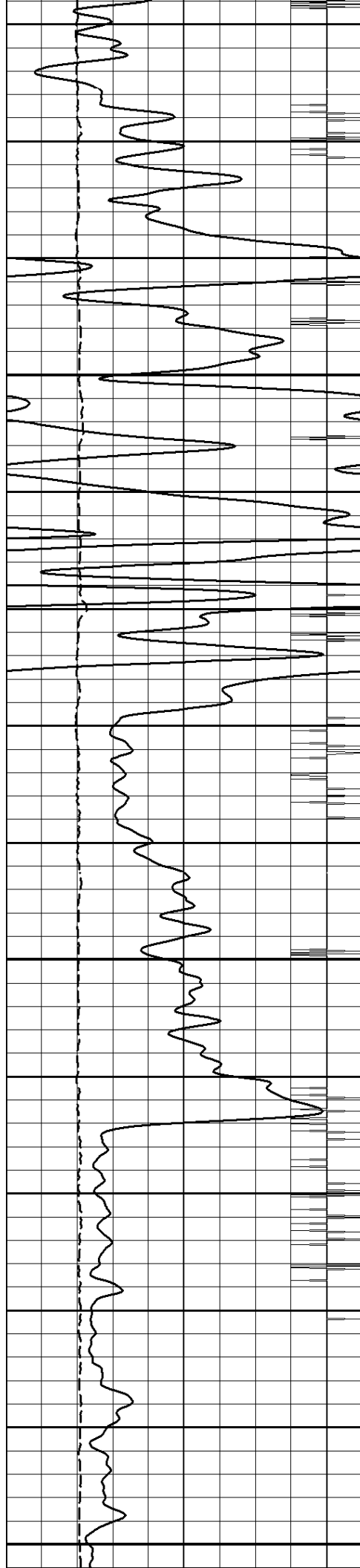


450

475

500

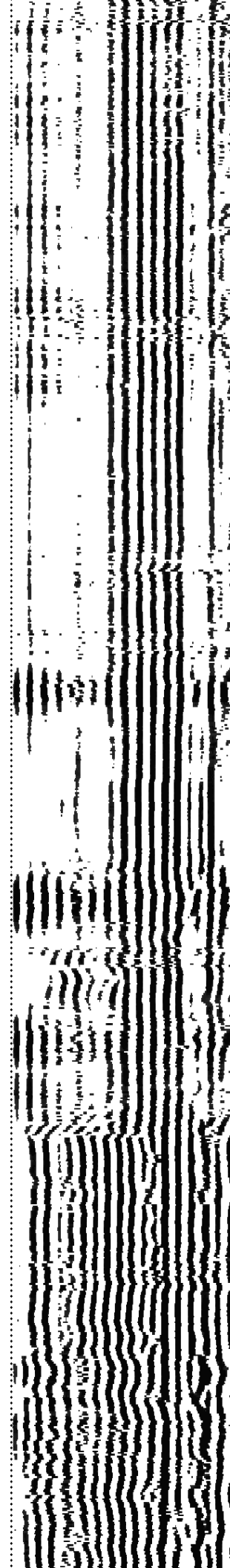
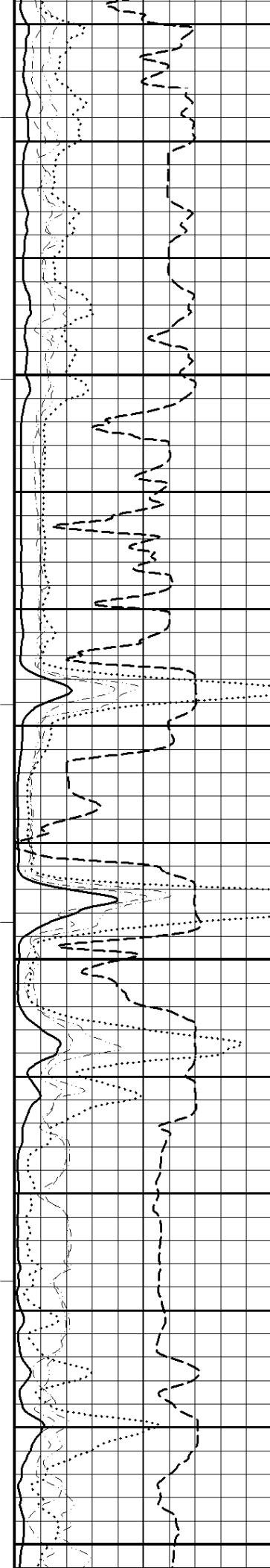


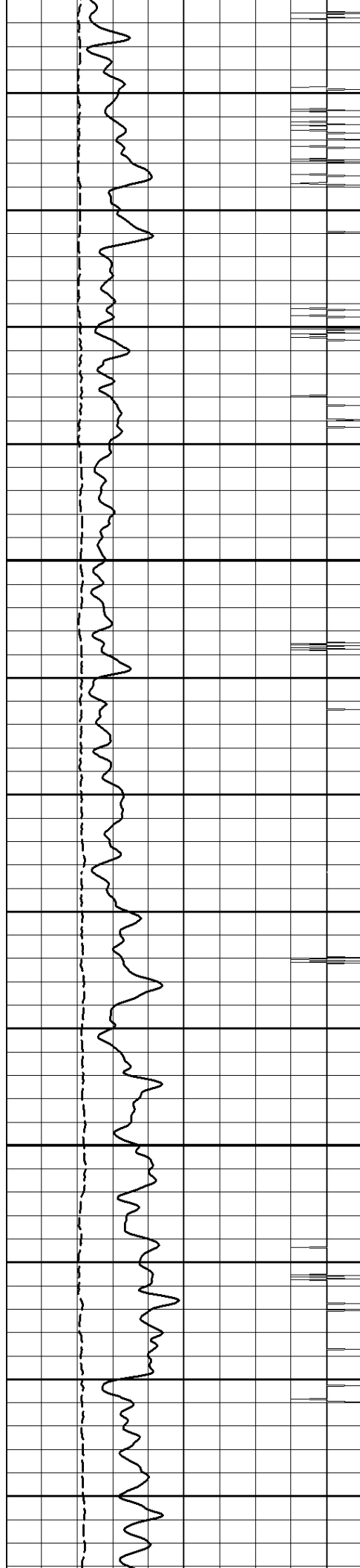


525

550

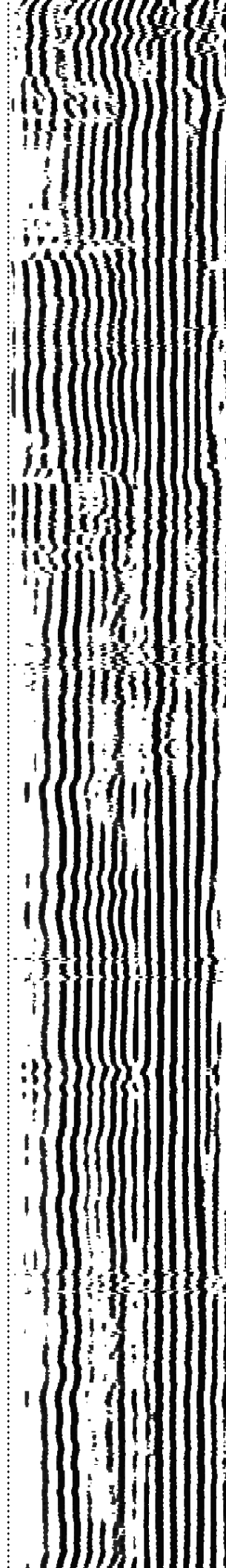
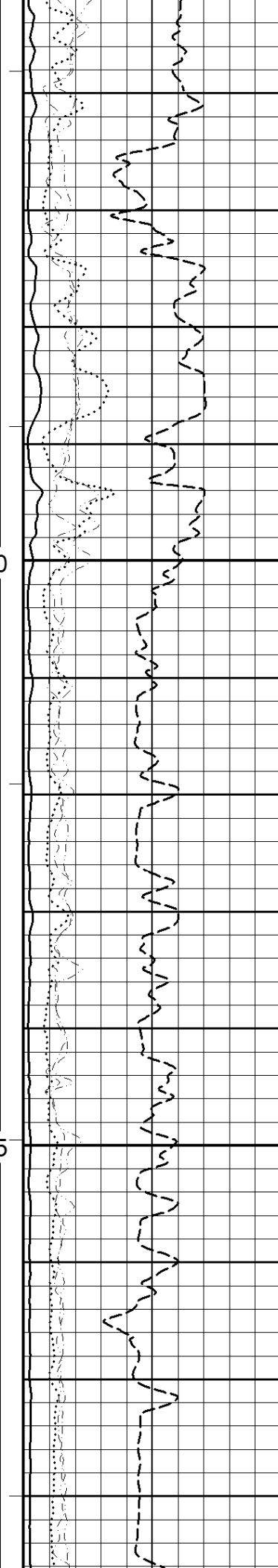
575

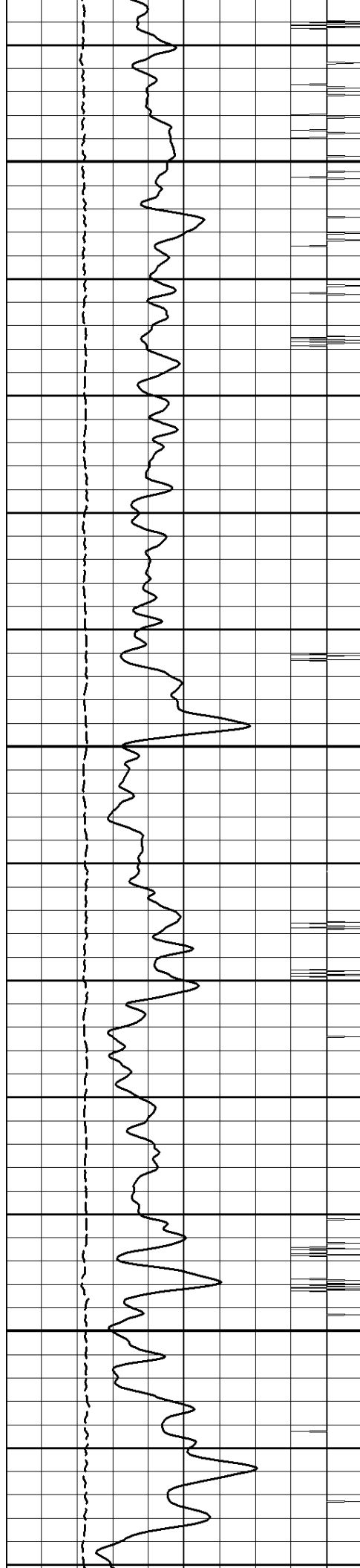




600

625

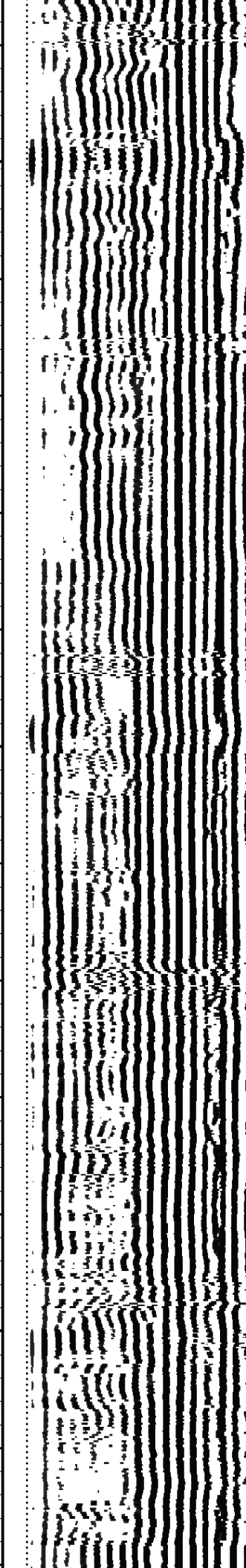
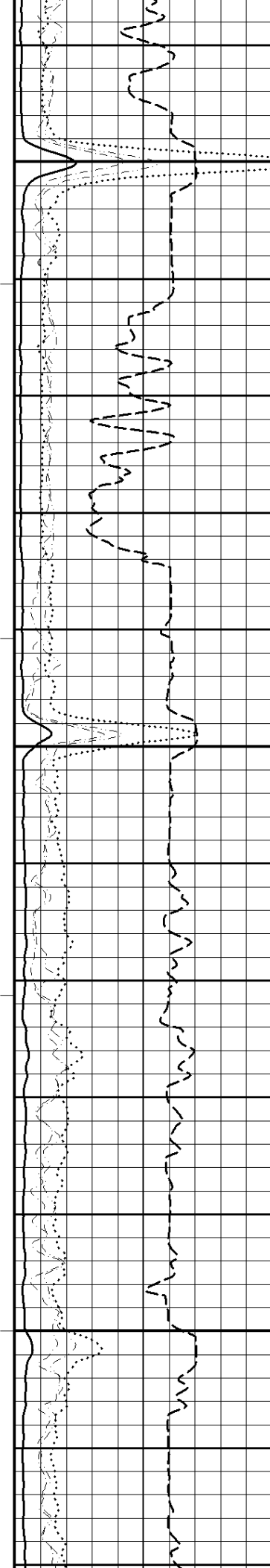


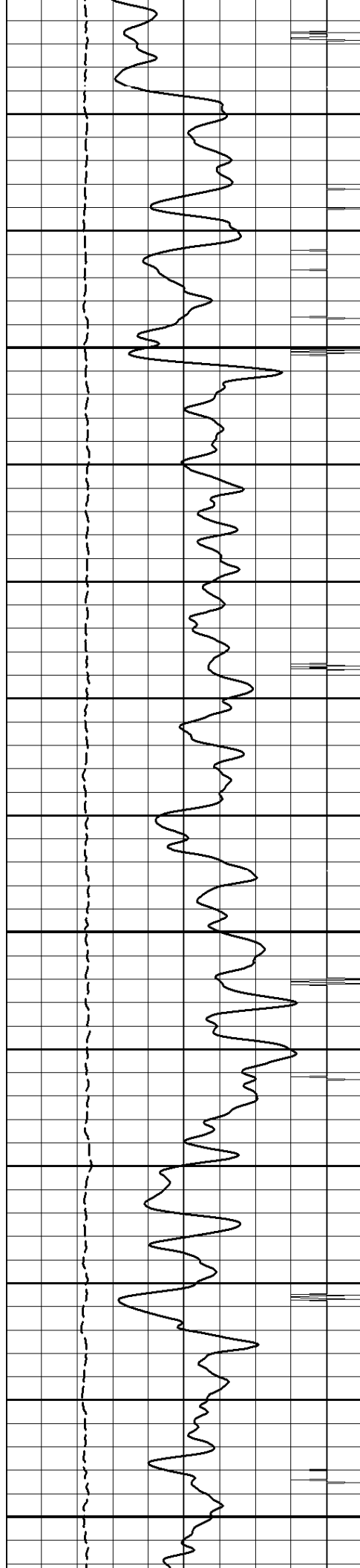


650

675

700

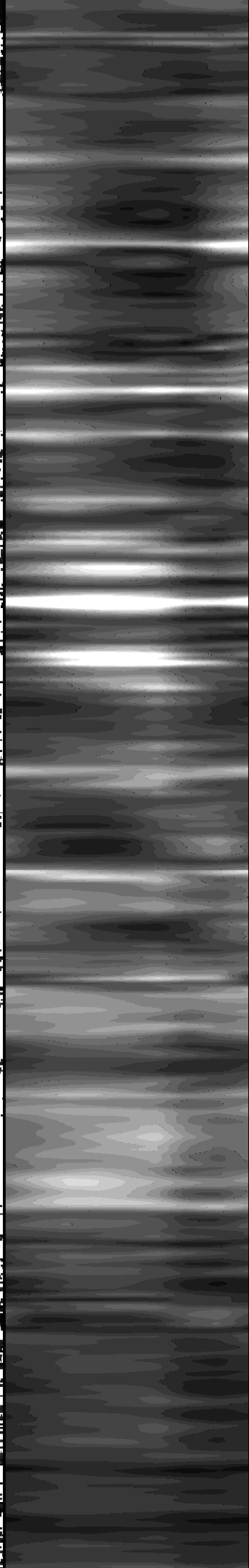
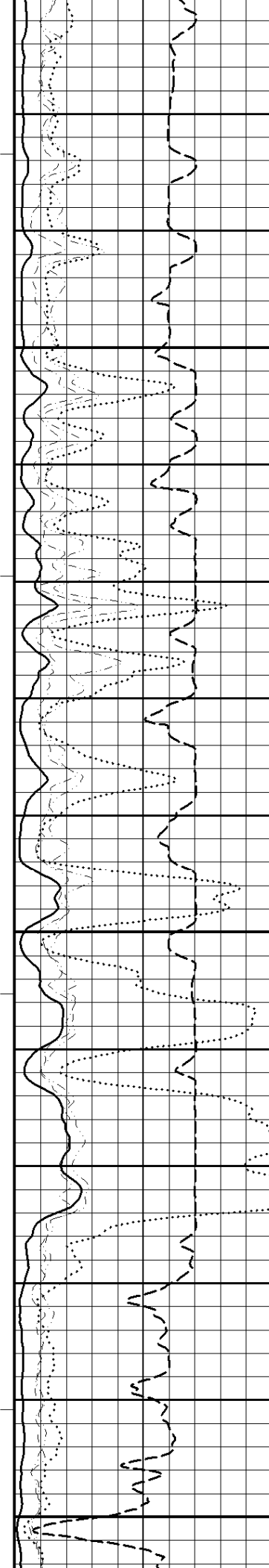




725

750

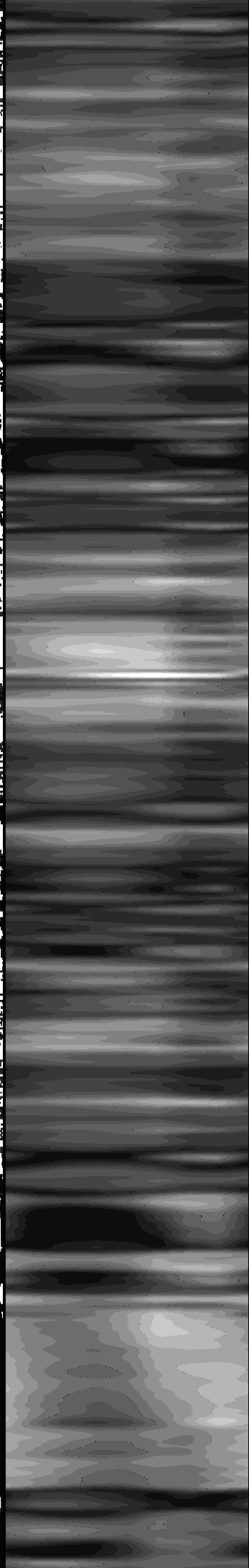
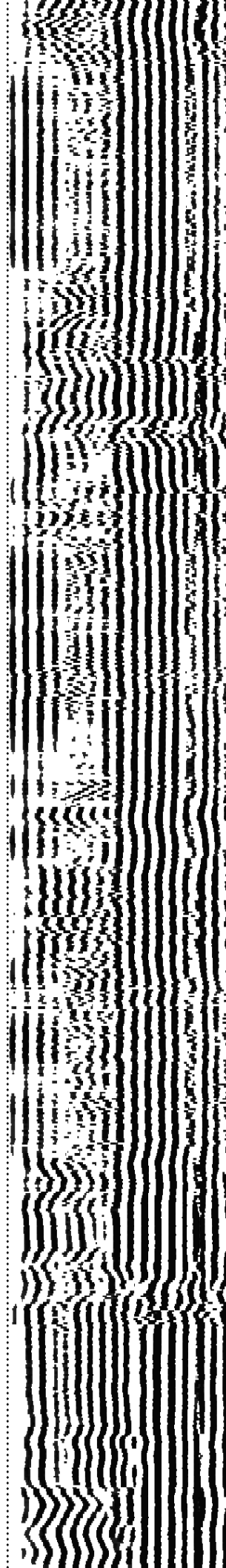
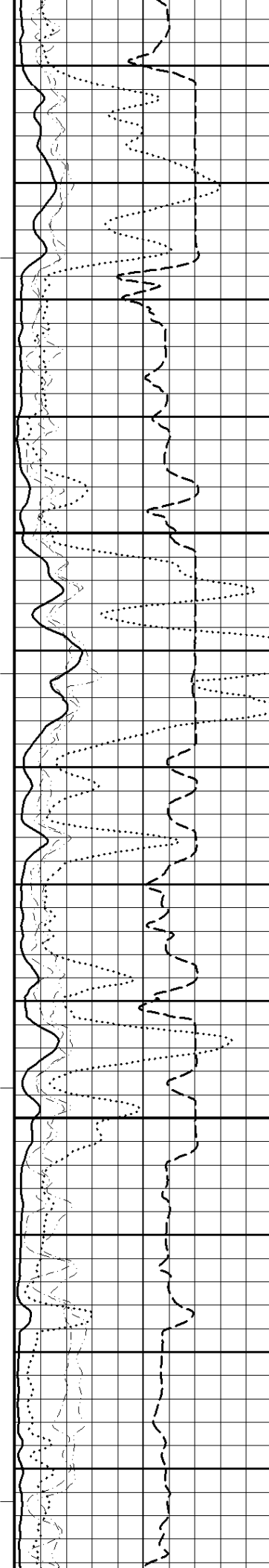
775

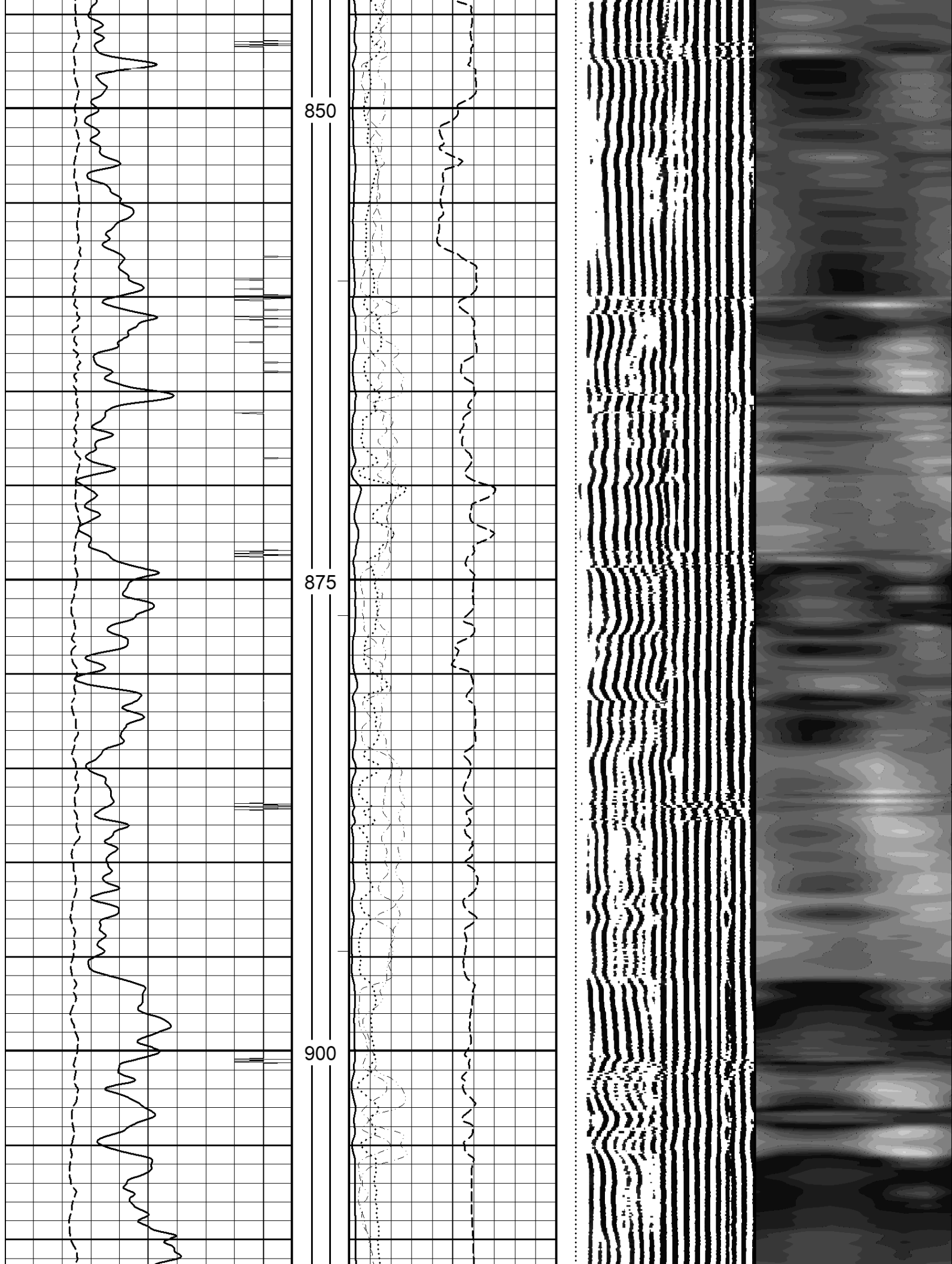


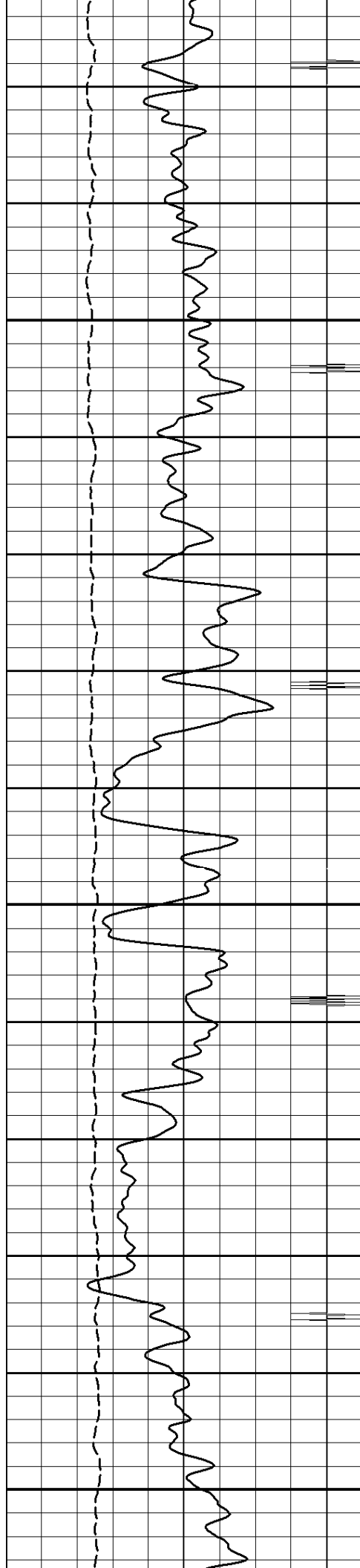


800

825



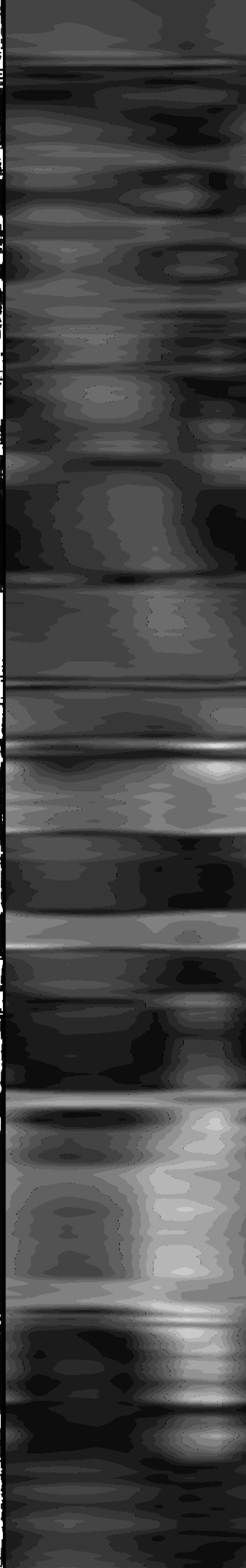
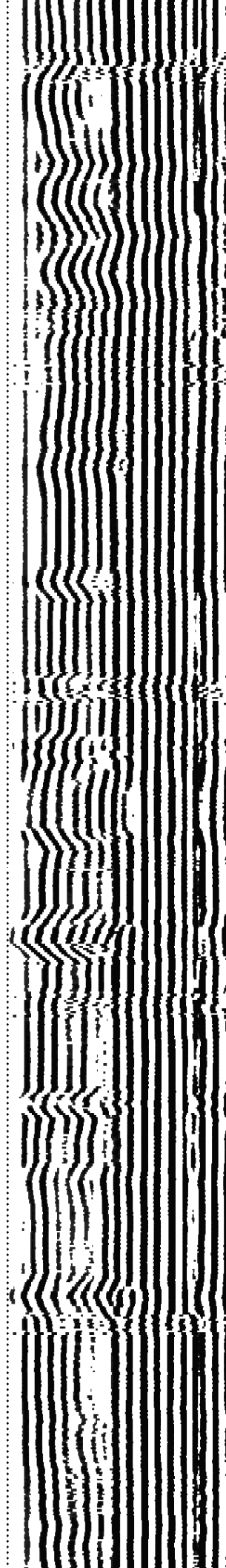
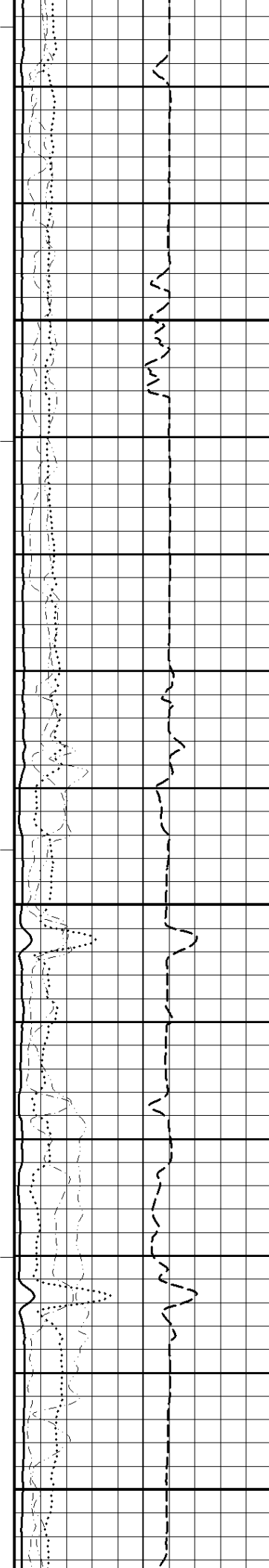


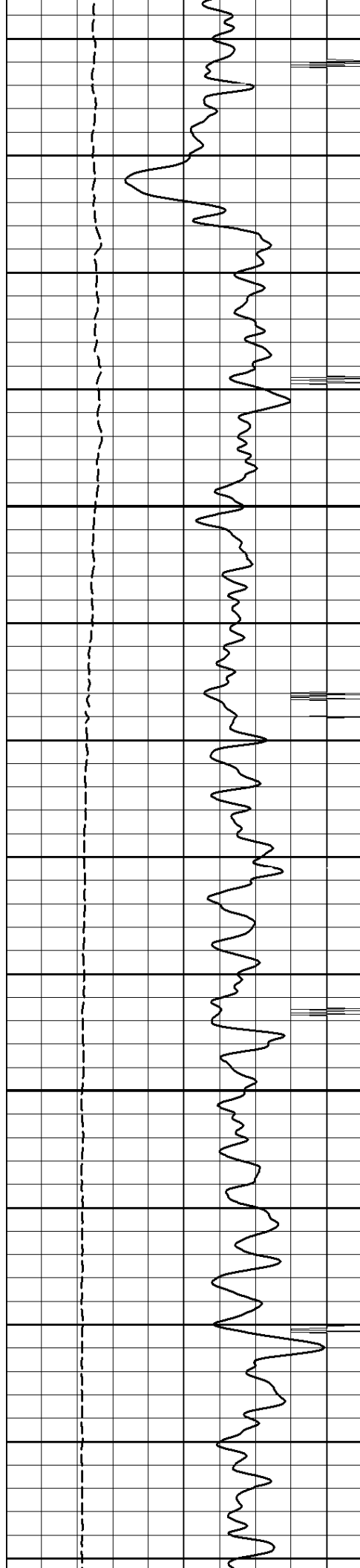


925

950

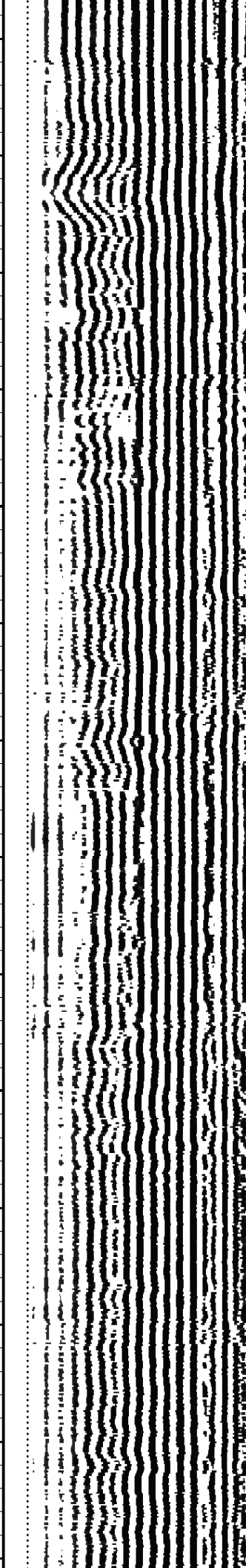
975

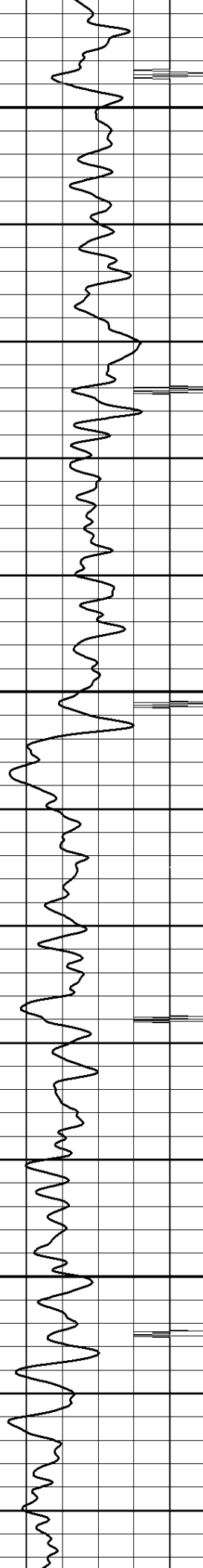




1000

1025

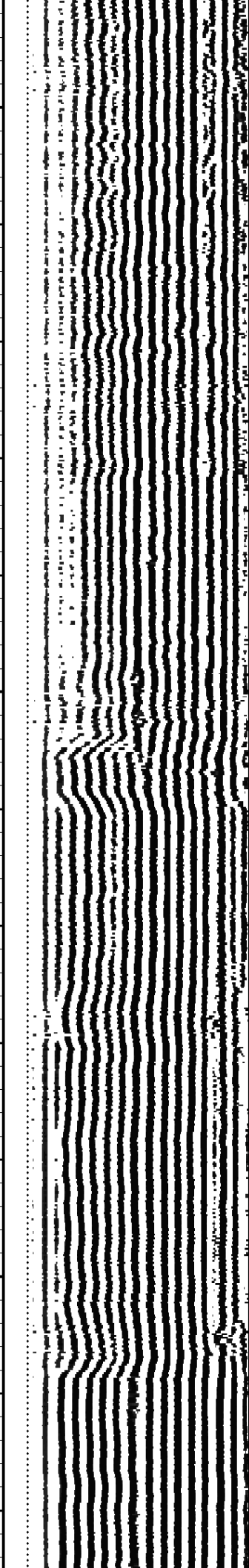
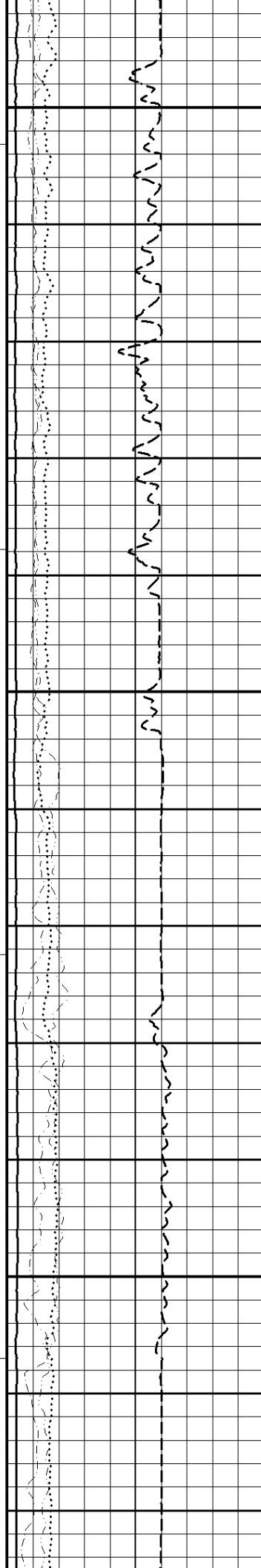


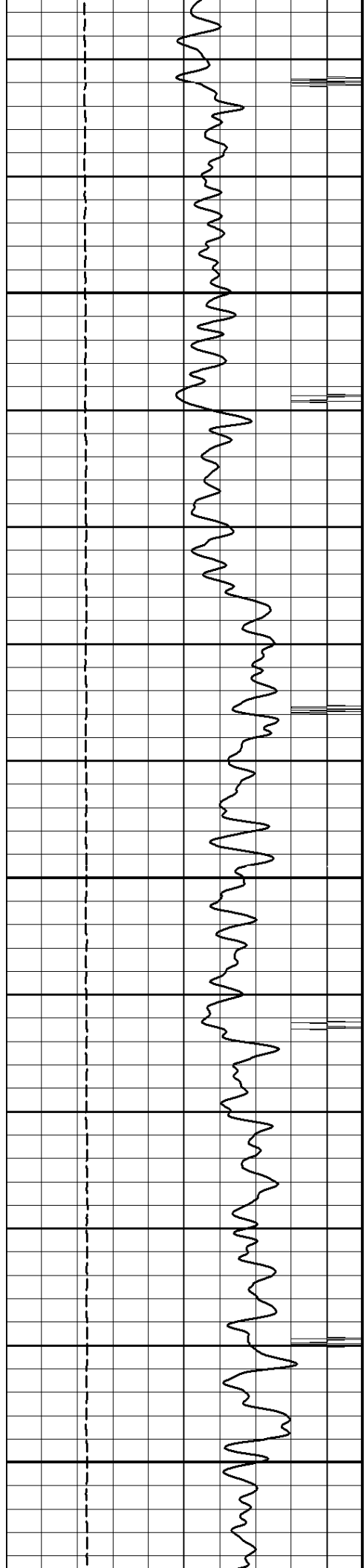


1050

1075

1100

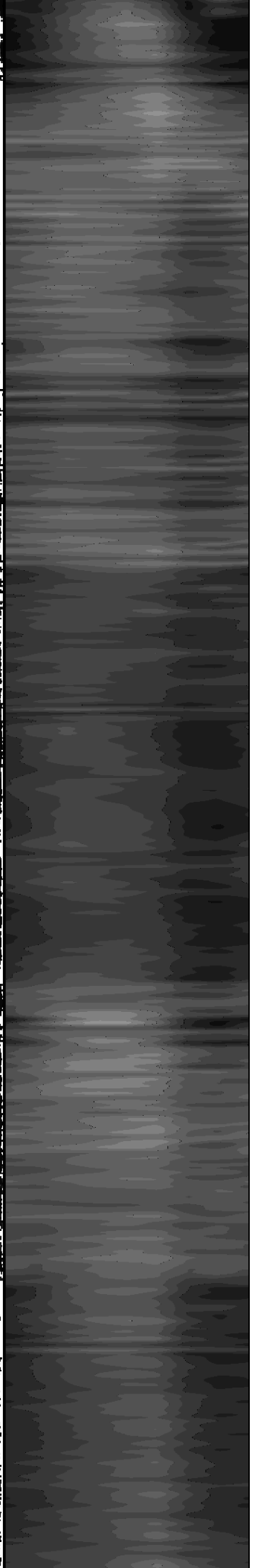
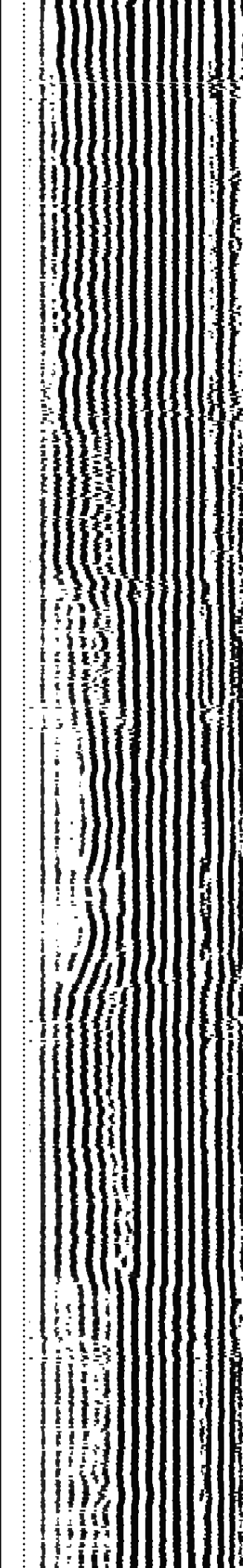
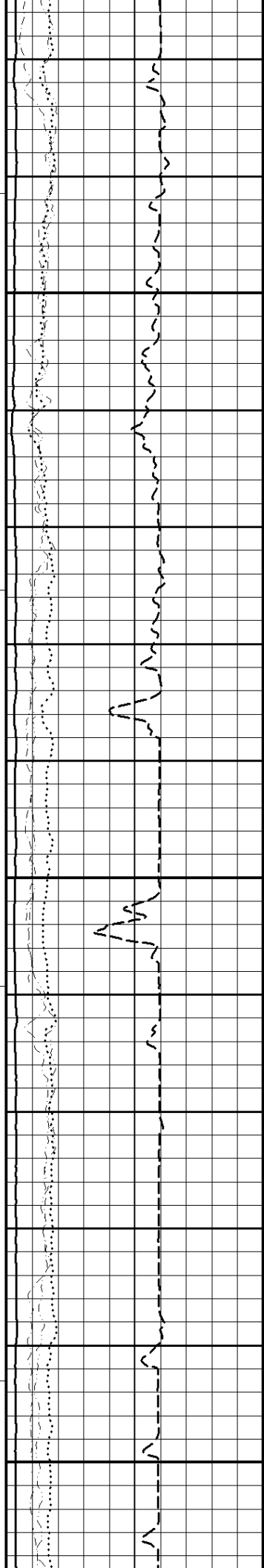


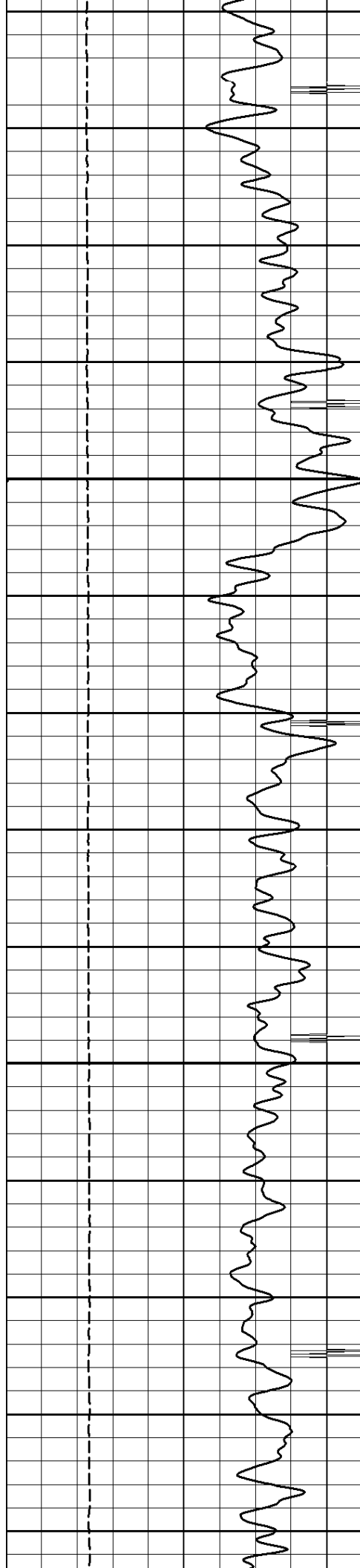


1125

1150

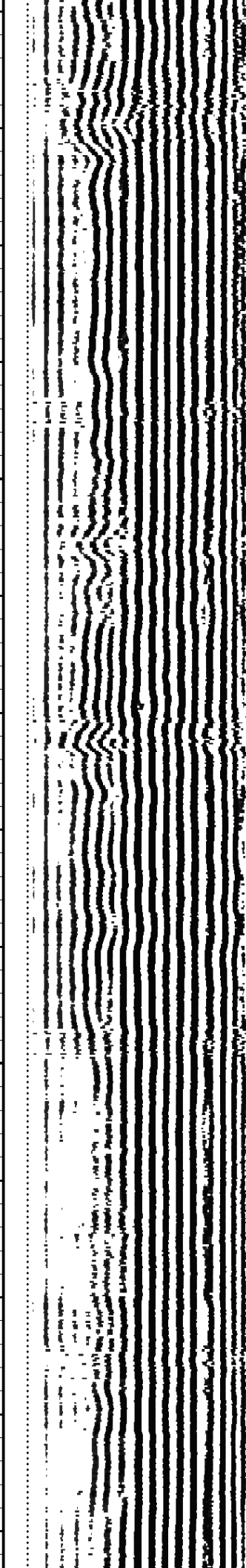
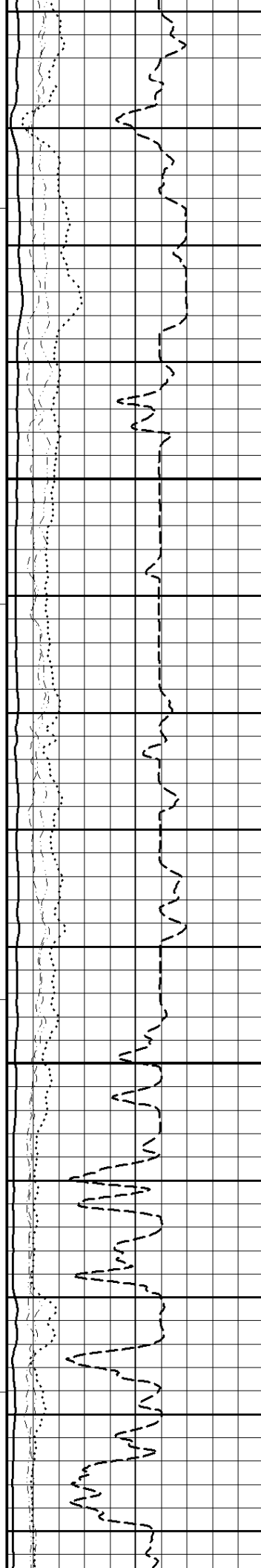
1175





1200

1225



CASING COLLAR

1250

1275

1300

TENSION

CASING COLLAR

GAMMA RAY

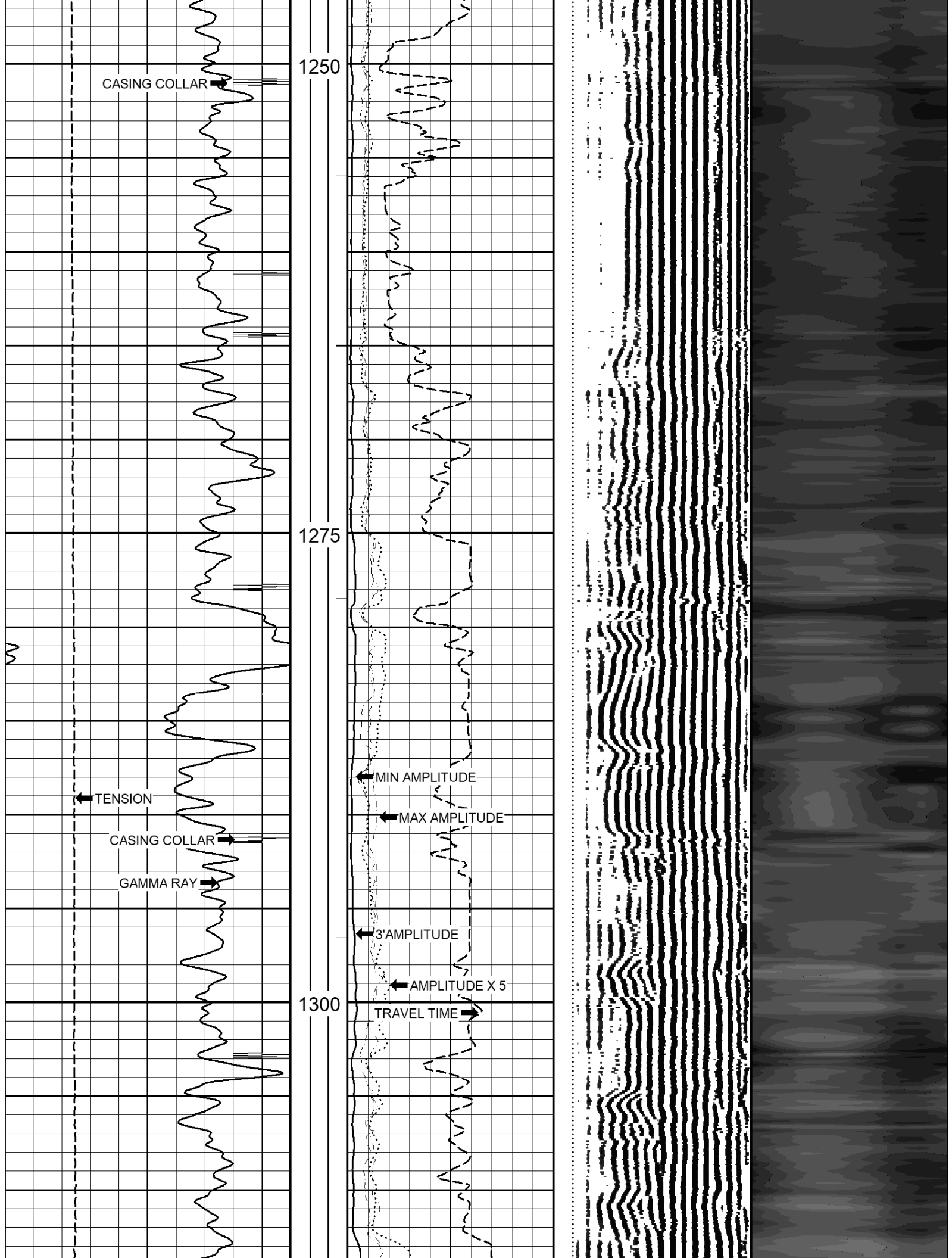
MIN AMPLITUDE

MAX AMPLITUDE

3' AMPLITUDE

AMPLITUDE X 5

TRAVEL TIME





2020-03-05 00:35

Tension (lbF)

0 4000

CL (mPV)

0 100

Gamma Ray (API)

0 120

Pass No. 6

1365.8

Radial Minimum Amplitude (mV)

0 100

Radial Maximum Amplitude (mV)

0 100

3' Amplitude (mV)

0 100

3' Amplitude x 5 (mV)

0 20

3' Transit Time (μs)

650 150

Logging Up
Shutin

Pipe Time (μs)

200 1200

3' VDL (μs)

200.00 1200.00

Radial Cement Map (mV)

0.00 35.00

METERS
1:240

File MAIN PASS.pre

Rev. 2017.03.21

REPEAT PASS

2020-03-05 00:28

Tension (lbF)

0 4000

CL (mPV)

0 100

Gamma Ray (API)

0 120

Pass No. 5

METERS

1:240

1294.8

1300

1325

Radial Minimum Amplitude (mV)

0 100

Radial Maximum Amplitude (mV)

0 100

3' Amplitude (mV)

0 100

3' Amplitude x 5 (mV)

0 20

3' Transit Time (μs)

650 150

Logging Up
Shutin

Pipe Time (μs)

200 1200

3' VDL (μs)

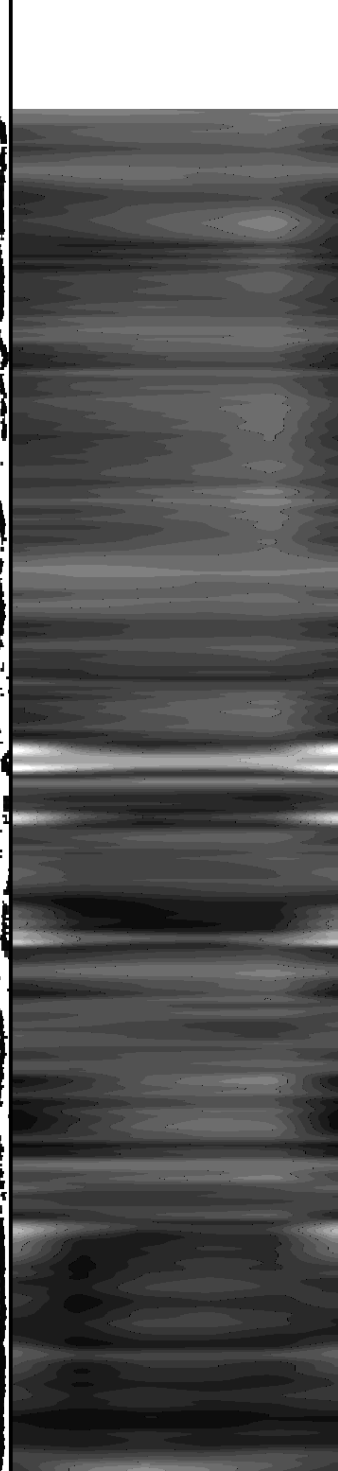
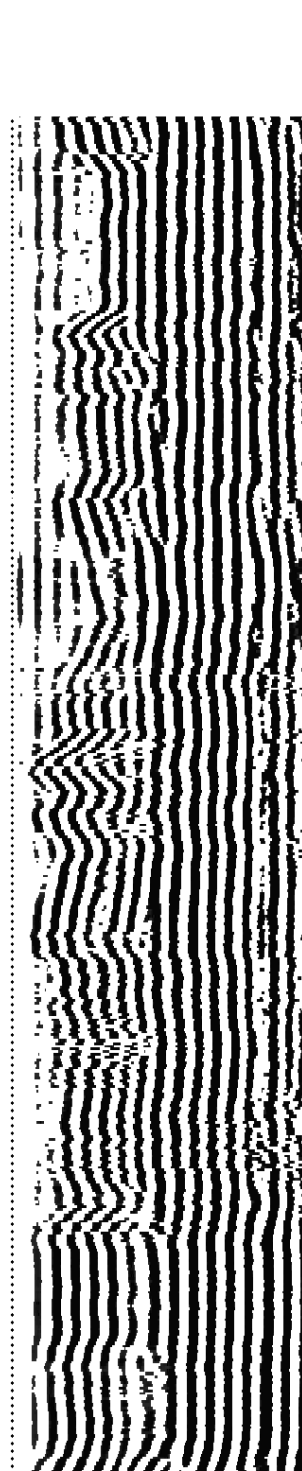
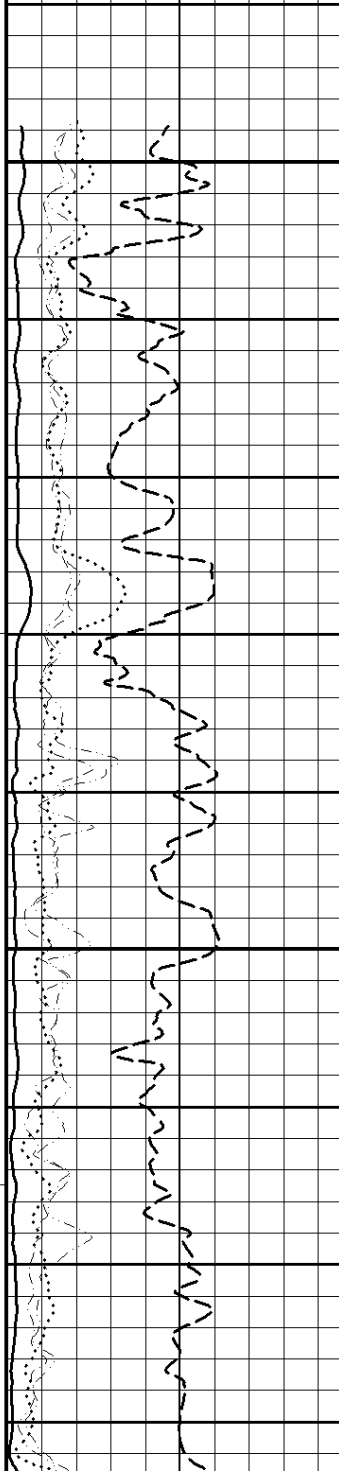
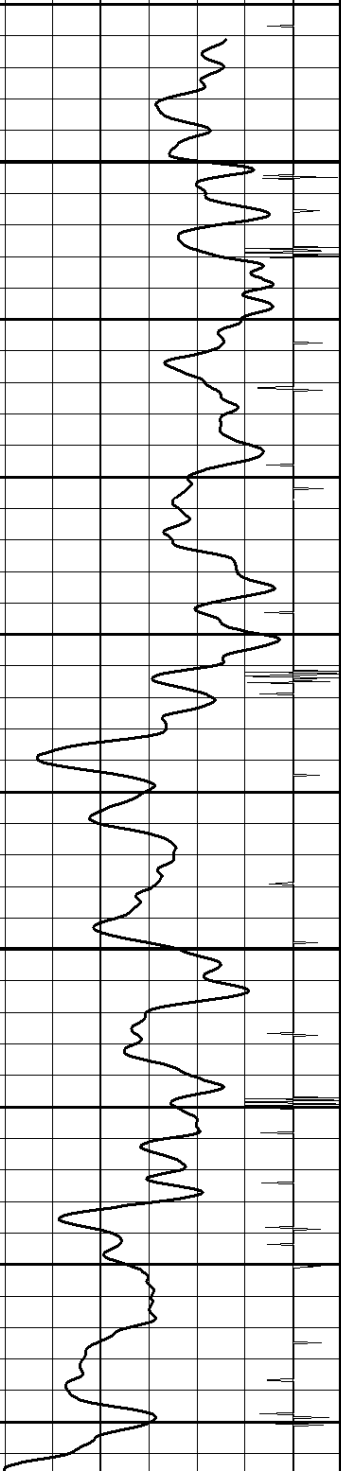
200.00 1200.00

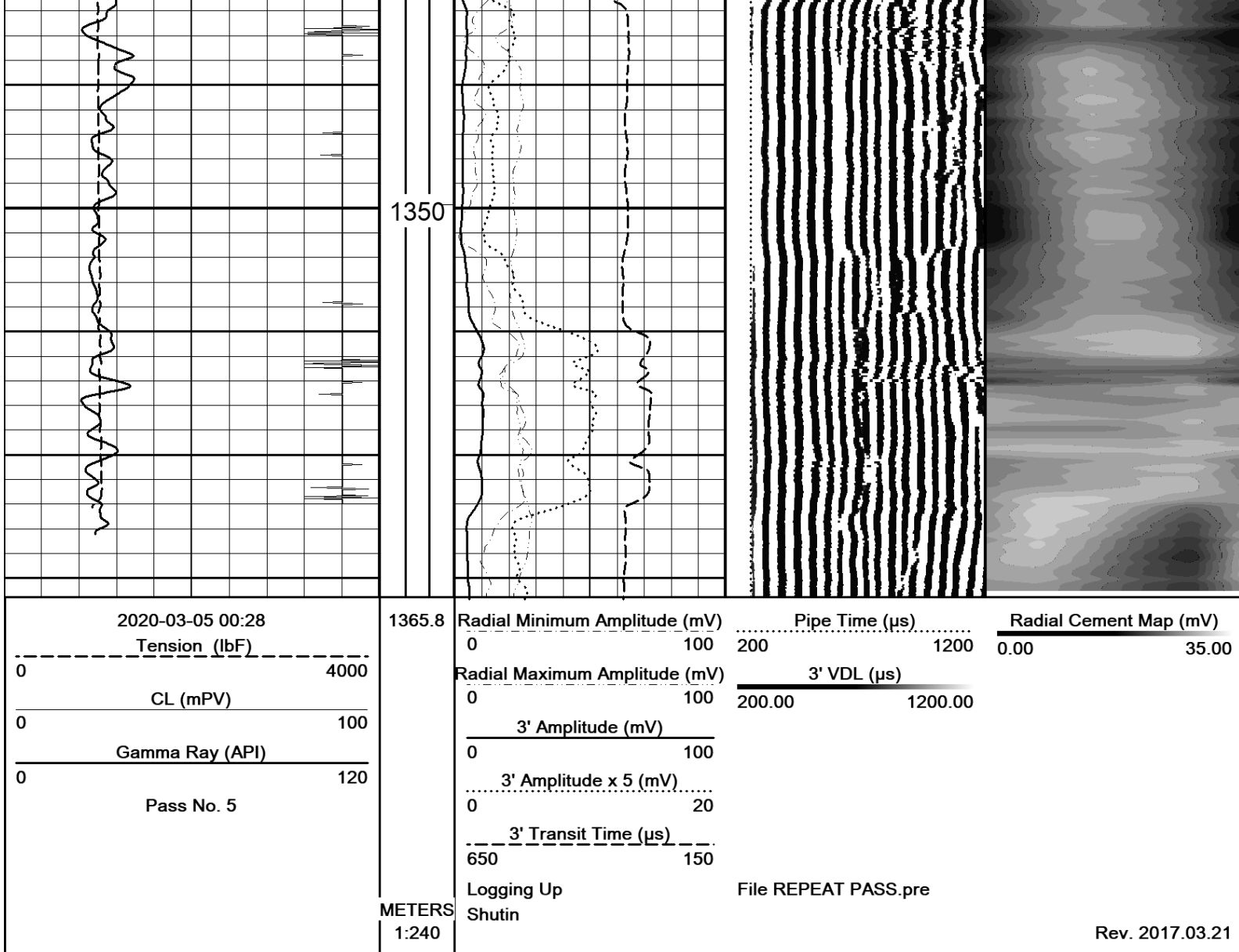
Radial Cement Map (mV)

0.00 35.00

File REPEAT PASS.pre

Rev. 2017.03.21





Calibration Summary

Serial Number:2002 --- 161.7mm --- 7 cal tank May 12 10

Calibration Date: 2010-05-12

Waveform Gain: 1

Waveforms	Free Pipe (mV)	Gain	Shift	Gate (us)	Width (us)	Polarity
Map1	61	0.0688954	0	249	30	Normal
Map2	61	0.0626245	0	249	30	Normal
Map3	61	0.0462942	0	249	30	Normal
Map4	61	0.0321609	0	249	30	Normal
Map5	61	0.0246755	0	249	30	Normal
Map6	61	0.0260523	0	249	30	Normal
Map7	61	0.0306253	0	249	30	Normal
Map8	61	0.0492215	0	249	30	Normal
3 Foot	61	0.0409628	0	301	30	Normal
Cal Pulse	1000	1	0	193	35	Reversed
5 Foot	61	0.171777	0	420	33	Normal



Well STRATEGIC ET AL CAMERON I-73 60 10N, 117 15W

Field CAMERON

Province NWT

Country CANADA

LSD. 173 **SEC.** 60 **TWP.** 10N **RGE.** 117 **W.** 15W